



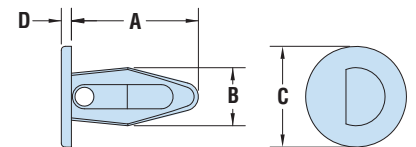
## HEYClip™ Nylon Kayak Clips

### Maximum Assembled Panel Sequence

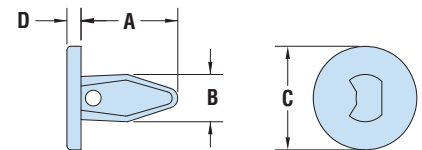
ASSEMBLED PANEL THICKNESS RANGE				MOUNTING HOLE DIAMETER RANGE				PART NO.	DESCRIPTION	PART DIMENSIONS								Head Type	Style
Maximum		Minimum		Maximum		Minimum				A		B		C		D			
in.	mm.	in.	mm.	in.	mm.	in.	mm.	Natural		in.	mm.	in.	mm.	in.	mm.	in.	mm.		
<b>KC Series</b>																			
.09	2,3	.06	1,5	.140	3,6	.135	3,4	<b>4272</b>	KC 09-14	.33	8,4	.16	4,1	.30	7,6	.06	1,5	TRUSS	
.09	2,3	.06	1,5	.141	3,6	.131	3,3	<b>4273</b>	KC 09-14-1	.27	6,9	.16	4,1	.40	10,2	.15	3,8	ROUND	2
.10	2,5	.08	2,0	.127	3,2	.123	3,1	<b>4274</b>	KC 10-13	.33	8,4	.13	3,3	.27	6,9	.04	1,0	TRUSS	
.13	3,3	.08	2,0	.141	3,6	.131	3,3	<b>4275</b>	KC 13-14	.37	9,4	.17	4,3	.41	10,4	.10	2,5	PAN	1
				.205	5,2	.175	4,4	<b>4276</b>	KC 13-21	.43	10,9	.21	5,3	.50	12,7	.25	6,4	ROUND	2
.14	3,6	.07	1,8	.150	3,8	.125	3,2	<b>4278</b>	KC 14-15	.43	10,9	.16	4,1	.30	7,6	.10	2,5	ROUND	1
				.200	5,1	.185	4,8	<b>4277</b>	KC 13-20	.44	11,2	.21	5,3	.37	9,4	.05	1,3	BINDING	
.16	4,1	.10	2,5	.192	4,9	.182	4,6	<b>4279</b>	KC 16-19	.43	10,9	.21	5,3	.37	9,4	.06	1,5	TRUSS	
				.200	5,1	.185	4,7	<b>4282</b>	KC 16-20	.44	11,2	.21	5,3	.38	9,7	.06	1,5	BINDING	2
.21	5,3	.09	2,3	.220	5,6	.200	5,1	<b>4283</b>	KC 21-22	.50	12,7	.24	6,1	.52	13,2	.07	1,8	PAN	
				.208	5,3	.240	6,1	<b>4284</b>	KC 21-28	.63	16,0	.29	7,4	.50	12,7	.05	1,3	BINDING	1
.22	5,6	.10	2,5	.280	7,1	.245	6,2	<b>4285</b>	KC 22-28	.63	16,0	.29	7,4	.86	21,8	.09	2,3	TRUSS	
				.260	6,6	.240	6,1	<b>4286</b>	KC 22-26	.46	11,7	.29	7,4	.45	11,4	.06	1,5	PAN	

Standard color natural. Consult Heyco for black and other colors.

- A low cost **replacement for screws and rivets.**
- Snap into round mounting holes.
- Fasten securely into a variety of materials.
- Ideal for assembling lightweight panels and components.



Style 1



Style 2



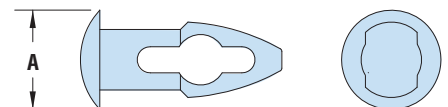
## HEYClip™ Nylon Holster Clips

### Mounting Hole Diameter/Assembled Panel Thickness Sequence

MOUNTING HOLE DIA.		ASSEMBLED PANEL THICKNESS		PART NO.	DESCRIPTION	HEAD DIAMETER	
in.	mm.	in.	mm.			in.	mm.
<b>HHC Series</b>							
.219	5,6	.093	2,3	<b>4287</b>	HHC 09-22	.34	8,6
		.125	3,3	<b>4289</b>	HHC 13-22		
		.156	4,1	<b>4292</b>	HHC 16-22		
		.187	4,8	<b>4294</b>	HHC 19-22		
		.219	5,5	<b>4295</b>	HHC 22-22		
		.250	6,4	<b>4296</b>	HHC 25-22		
		.281	7,1	<b>4297</b>	HHC 28-22		
		.312	7,9	<b>4298</b>	HHC 31-22		
		.343	8,6	<b>4299</b>	HHC 34-22		
		.375	9,7	<b>4322</b>	HHC 38-22		
.250	6,4	.093	2,3	<b>4288</b>	HHC 09-25	.50	12,7
.156	4,1	.250	6,4	<b>4293</b>	HHC 25-16	.31	7,9

Standard color natural. Consult Heyco for black and other colors.

- Holster shaped interior allows the part to collapse more completely, for assembly with just **fingertip pressure.**
- Tapered, bullet-style point **slides easily** into any mounting hole.
- Angled panel locking section **takes up slack** to provide for a tight assembly.
- The design allows for a relatively large clip-diameter-to-hole-size ratio, resulting in **higher retention force.**
- Consult Heyco for other mounting hole and panel thickness **variations.**



Quick Specs

Material: Nylon 6/6  
 Flammability Rating: 94V-2  
 Temperature Range: 32°F (0°C) to 185°F (85°C)