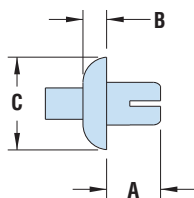




HEYClip™ Blunt Rivets

- Part Description Key: PR XXX-YYY where XXX = Mounting Hole Diameter (inches) and YYY = minimum Panel Thickness (inches).

- Pre-driven



Mounting Hole Dia.	WILL FIT THESE PANELS Assembled Panel Thickness						PART NO.		DESCRIPTION	PART DIMENSIONS					
	Minimum		Maximum		Black	White	A Length			B Head Height		C Head Diameter			
	in.	mm.	in.	mm.			in.	mm.		in.	mm.	in.	mm.		
.122	3,1	.078	2,0	.118	3,0	13350	13351	BR 122-078	.18	4,5	.08	2,0	.23	5,8	
		.118	3,0	.157	4,0	13352	13353	BR 122-118	.22	5,5					
.161	4,1	.098	2,5	.138	3,5	9141	9142	BR 161-098	.20	5,0	.09	2,2	.31	8,0	
		.138	3,5	.177	4,5	13356	13357	BR 161-138	.24	6,0					
.201	5,1	.078	2,0	.118	3,0	13360	13361	BR 201-078	.20	5,0	.11	2,8	.37	9,5	
		.118	3,0	.157	4,0	13362	13363	BR 201-118	.24	6,0					
		.157	4,0	.197	5,0	13364	13365	BR 201-157	.28	7,0					
		.197	5,0	.236	6,0	13366	13367	BR 201-197	.32	8,0					
		.236	6,0	.276	7,0	13368	13369	BR 201-236	.35	9,0					
		.276	7,0	.315	8,0	13370	13371	BR 201-276	.39	10,0					

Standard colors black and white.

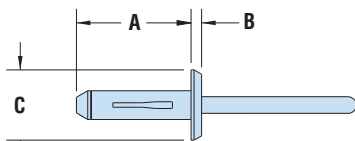


HEYClip™ Expansion Rivets

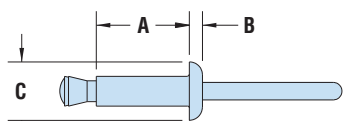
- One-piece, all plastic expansion rivet.
- Designed to securely fasten a wide variety of materials in a range of applications.
- Inserts quickly from either side of assembly.
- Use with standard rivet setting tool - pull the pin through the body and panels are drawn together.
- Pin breaks off even with head and leaves an attractive, finished appearance.
- Effective for soft materials such as rubber, padded fabrics, etc.

Mounting Hole Dia.	WILL FIT THESE PANELS Assembled Panel Thickness						PART NO.	DESCRIPTION	PART DIMENSIONS					
	Minimum		Maximum		Black	A Length			B Head Height		C Head Diameter			
	in.	mm.	in.	mm.		in.			mm.	in.	mm.	in.	mm.	
EXR Style 1														
.157	4,0	.059	1,5	.177	4,5	12230	EXR 177-157	.73	18,5	.10	2,5	.31	8,0	
		.118	3,0	.157	4,0	12231	EXR 157-197	.65	16,5					
.197	5,0	.118	3,0	.236	6,0	12232	EXR 236-197	.79	20,0	.07	1,8	.47	12,0	
		.236	6,0	.394	10,0	12233	EXR 394-197	.98	25,0					
.236	6,0	.157	4,0	.335	8,5	12235	EXR 335-236	1.10	28,0	.10	2,5	.51	13,0	
.240	6,1	.157	4,0	.311	7,9	12237	EXR 311-240	1.14	29,0	.10	2,5	.67	16,9	
.248	6,3	.295	7,5	.453	11,5	12238	EXR 453-248	1.26	31,9					
EXR Style 2														
.130	3,3	.039	1,0	.138	3,5	12650	EXR 138-130	.25	6,4	.06	1,4	.25	6,4	
		.138	3,5	.256	6,5	12651	EXR 256-130	.38	9,6					
		.256	6,5	.374	9,5	12652	EXR 374-130	.50	12,7					
.161	4,1	.039	1,0	.138	3,5	12653	EXR 138-161	.25	6,4	.07	1,8	.32	8,0	
		.138	3,5	.236	6,0	12654	EXR 236-161	.38	9,6					
.193	4,9	.236	6,0	.354	9,0	12655	EXR 354-161	.50	12,7	.08	2,0	.38	9,6	
		.059	1,5	.177	4,5	12656	EXR 177-193	.31	8,0					
.224	5,7	.177	4,5	.295	7,5	12657	EXR 295-193	.44	11,2	.09	2,2	.47	12,0	
		.295	7,5	.413	10,5	12658	EXR 413-193	.57	14,4					
.224	5,7	.079	2,0	.197	5,0	12659	EXR 197-224	.38	9,6	.09	2,2	.47	12,0	
		.197	5,0	.315	8,0	12660	EXR 315-224	.50	12,7					
		.315	8,0	.453	11,5	12661	EXR 453-224	.63	15,9					

Standard color black.



Style 1



Style 2

	BR	EXR Style 1	EXR Style 2
Material	Nylon 6	Nylon 6/6 Body & Acetal (POM) Pin	Nylon 6/6 Body with Polycarbonate Pin
Flammability Rating	94V-2	94V-2 Body and 94-HB Pin	94 V-2 Body and Pin
Temperature Range	-40° F (-40°C) to 239°F (115°C) (BR)	-40° F (-40°C) to 248°F (120°C) (EXR Styles)	