

“Stay Connected” with



Liquid Tight Cordgrips

a PennEngineering® Company



Heyco®-Tite EMC-2 Brass Liquid Tight Cordgrips

Straight-Thru, Metric Hubs

EMC Nickel-Plated Brass with Contact Sleeve

The Ultimate in Liquid Tight Strain Relief Protection

- Ideal for applications where **Electromagnetic Interference (EMI) protection or Electromagnetic Compatibility (EMC) is needed.**
- **Innovative contact spring**, due to strong clamping, virtually guarantees a secure shielded tap connection.
- Contact spring can be precisely positioned due to its clearly defined limit stop, making installation simple.
- Clamping technique ensures the cable can be rotated, pushed and easily dismantled during mounting.
- Excellent 360° shield contact with contact sleeve due to braided shield which runs into the gland.
- Combination of the sealing insert and the contact socket guarantees a constant contact quality with minimal transfer impedance.
- For use in clearance or threaded holes.
- DFARS Compliant

CABLE DIA. RANGE				PART NO.	THREAD SIZE	UL or IEC	PART DIMENSIONS							
Minimum		Maximum					A Clearance Hole Dia.		B Max. O.A. Length		C Thread Length		D Wrenching Nut Flat Size	
in.	mm.	in.	mm.				in.	mm.	in.	mm.	in.	mm.	in.	mm.

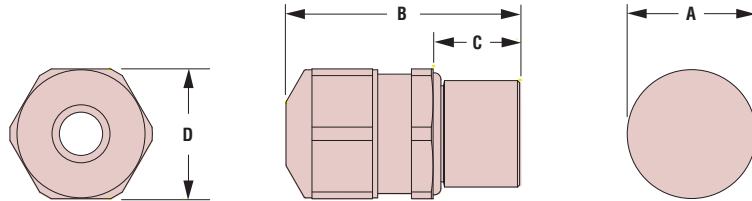
Standard Thread

.138	3,5	.197	5,0	4594	M12 x 1,5	cULus	.472	12,0	1.26	32,0	.39	10,0	.59	15,0
.197	5,0	.256	6,5	4595										
.236	6,0	.413	10,5	4596	M16 x 1,5	cULus	.643	16,0	1.38	35,0	.39	10,0	.71	18,0
.315	8,0	.591	15,0	4597	M20 x 1,5	cULus	.787	20,0	1.46	37,0	.39	10,0	.94	24,0
.492	12,5	.807	20,5	4598	M25 x 1,5	cULus	.984	25,0	1.73	44,0	.43	11,0	1.18	30,0
.669	17,0	1.004	25,4	4599	M32 x 1,5	cULus	1.260	32,0	1.81	46,0	.51	13,0	1.42	36,0

Short Thread

.138	3,5	.197	5,0	14594	M12 x 1,5	cULus	.472	12,0	1.06	27,0	.20	5,0	.59	15,0
.197	5,0	.256	6,5	14595										
.236	6,0	.413	10,5	14596	M16 x 1,5	cULus	.630	16,0	1.18	30,0	.20	5,0	.71	18,0
.315	8,0	.591	15,0	14597	M20 x 1,5	cULus	.787	20,0	1.30	33,0	.24	6,0	.94	24,0
.492	12,5	.807	20,5	14598	M25 x 1,5	cULus	.984	25,0	1.57	40,0	.28	7,0	1.18	30,0
.669	17,0	1.004	25,5	14599	M32 x 1,5	cULus	1.260	32,0	1.61	41,0	.31	8,0	1.42	36,0

ALL NEW PRODUCTS



Heyco®-Tite EMC Brass Locknuts

EMC Nickel-Plated Brass

- Ideal for use with painted surfaces to ensure **EMC/EMI integrity.**
- Cutting teeth on locknuts provide optimal shield contact with painted surfaces.
- Nickel-plated finish over brass provides excellent corrosion resistance and durability.
- DFARS Compliant

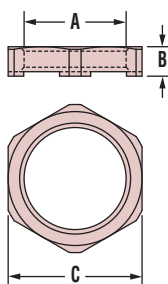
THREAD SIZE A	PART NO.	DESCRIPTION	PART DIMENSIONS			
			B Thickness		C Wrenching Flat Size	
			in.	mm.	in.	mm.

PG Thread

PG 7	4671	EMC LN PG 7	.13	3,3	.59	15,0
PG 9	4672	EMC LN PG 9	.13	3,3	.71	18,0
PG 11	4673	EMC LN PG 11	.14	3,5	.83	21,0
PG 13.5	4674	EMC LN PG 13.5	.14	3,5	.94	24,0
PG 16	4675	EMC LN PG 16	.14	3,5	1.02	26,0
PG 21	4676	EMC LN PG 21	.16	4,0	1.26	32,0
PG 29	4677	EMC LN PG 29	.18	4,6	1.61	41,0

Metric Thread

M8 x 1,25	4681	EMC LN M8	.13	3,3	.43	11,0
M10 x 1,5	4682	EMC LN M10	.13	3,3	.51	13,0
M12 x 1,5	4683	EMC LN M12	.14	3,5	.59	15,0
M16 x 1,5	4684	EMC LN M16	.14	3,5	.75	19,0
M20 x 1,5	4685	EMC LN M20	.16	4,0	.94	24,0
M25 x 1,5	4686	EMC LN M25	.16	4,0	1.18	30,0
M32 x 1,5	4687	EMC LN M32	.20	5,0	1.42	36,0



Material	Nickel-Plated Brass W/TPE Sealing Gland
Certifications	cULus Recognized under the Component Program of Underwriters' Laboratories File E51579 to both Canadian and U.S. requirements
Temperature Range	-40°F (-40°C) to 212°F (100°C)
IP Rating	IP 68, IP 69K